

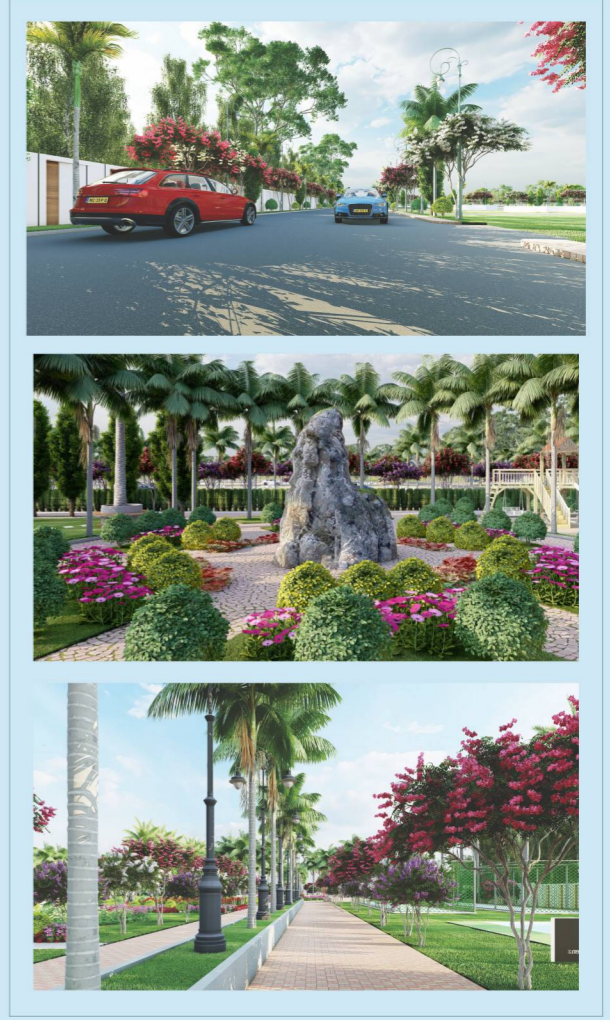
ELEVATE YOUR LIVING EXPERIENCE
**DISCOVER THE HIGHLIGHTS OF
 THE CAPITAL**



At The Rise Open Plots, we offer more than just land; we provide an opportunity to create your legacy. Nestled in a prime location, these open plots are designed to give you the perfect balance of nature, convenience, and modern living.

The Rise Open Plots
**CRAFTING YOUR FUTURE,
 ONE PLOT AT A TIME**

Discover a place where your dreams take root and grow. The Rise Open Plots is more than just a real estate venture; it's a canvas for your aspirations. Designed to offer you the freedom to create, this community provides meticulously planned plots that cater to your unique vision of the perfect home or investment. Nestled in a prime location, these plots are set amidst serene surroundings while offering unparalleled connectivity to urban conveniences. With world-class infrastructure, secure environments, and green open spaces, The Rise Open Plots is the ideal foundation for a brighter and more prosperous future.



PROJECT HIGHLIGHTS

- + Grand Entrance Arch
- + Well Planned Residential Villa Plots
- + Gated Community
- + Clear Title with Legal Opinion
- + 40 Feet CC Roads
- + Underground Electricity
- + Overhead Water Tank
- + Rainwater Harvesting
- + Tree Avenue Plantation
- + Pollution Free Environment
- + Underground Drainage
- + Underground Pipeline for Water
- + 100% Vaasthu
- + Bank Loans Available



GAZEBO



KIDS
PLAY AREA



OUTDOOR GYM



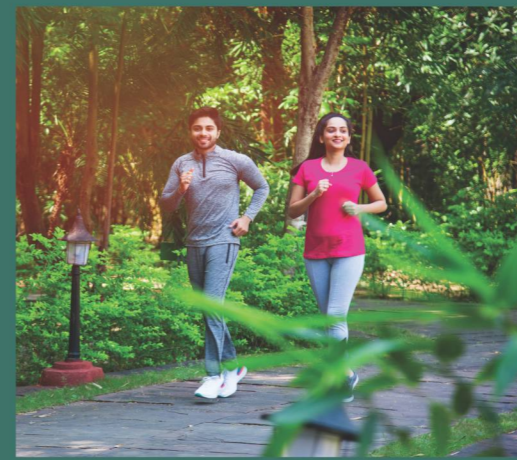
BUDDHA
STATUE



ELDERS
SEATING AREA



WALKING /
JOGGING TRACK



**"The Perfect Connection
 to a Brighter Future"**



LOCATION MAP
 (NOT TO SCALE)

NEIGHBOURHOODS

- +1 min from Ramakrishna Venuzia Housings & IT Towers
- + 2 mins from Nagarjuna University
- + 5 mins from Capital Amaravati Inner Ring Road
- + 5 mins from Vijayawada West By-Pass
- + 5 mins from Haailand
- + 10 mins from NRI Hospital
- + 5 mins from Capital Amaravati Inner Ring Road
- + 10 mins from Electronic City
- + 15 mins from AIIMS Hospital
- + 15 mins from SRM, VIT, Amrutha University
- + 15 mins from Assembly, Highcourt & Secretiate
- + 10 mins from Guntur City
- + 15 Mins from Vijayawada City

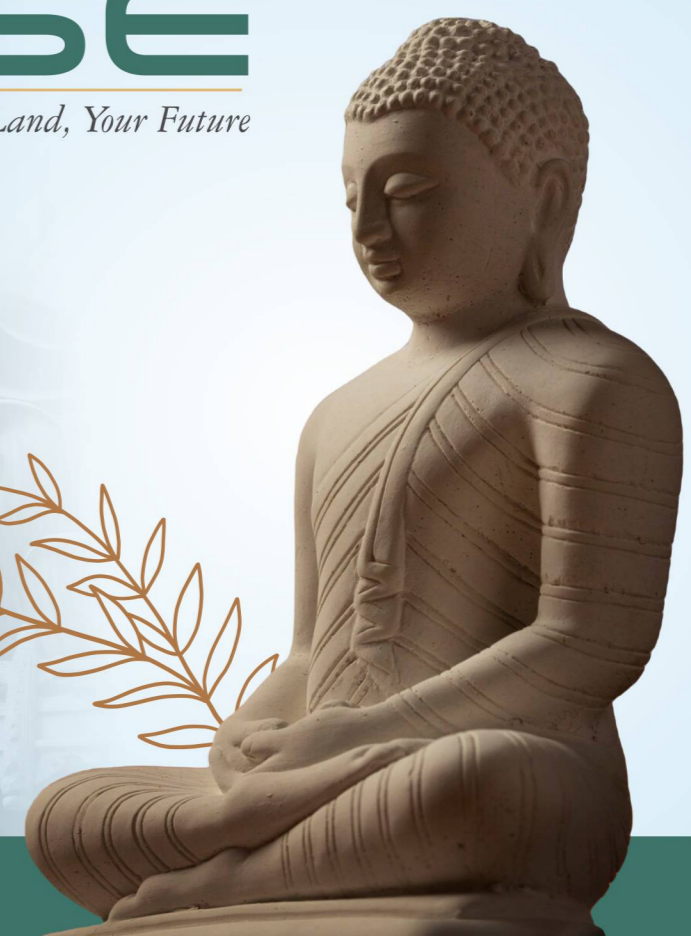


అమరావతిలో..
 మీ చిరునామా...



@ KAZA TOLL PLAZA,
 AMARAVATI, AP.

APCRDA TLP NO: 1168/103/LP/PDAKNI/2024



Corporate Office Address
 #59A-21/3-2A, R.R. Gardens,
 Vijaya nagar Colony,
 Beside Anuradha Polyclinic,
 Patamata, Vijayawada - 520 010.

Registered Office Address
 #6-16-45, 1st Floor,
 16/3 Arundelpet,
 Guntur - 522 002.

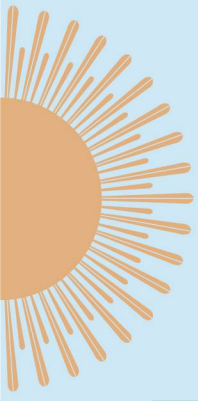
Architect & Engineers
JOVEN
 Architects & Interiors
 N. Koteswara Rao
 Chief Architect
 +91 91777 98777
 100Ft. Road, Madhapur, Hyderabad - 500 081.

E-mail : sunsiriprojects@gmail.com Website : www.sunsiri.in

PLAN YOUR FUTURE IN A PROGRESSIVE LOCATION



Note: This brochure is only a conceptual presentation of the project and not a legal offering. The promoters reserve the right to alter and make changes in elevation, specifications and plans as deemed fit.



FOUNDATIONS FOR A BRIGHTER TOMORROW

Invest in Land,
Secure Your Legacy.



CUSTOMIZED HOUSE CONSTRUCTION

APCRDA
Proposed

9 Acres
Project

103
Villa Plots

EXCELLENT
Location

Land is more than an asset; it's a legacy that grows with time. At The Rise Open Plots, your investment is not just in a piece of land but in a future of stability, prosperity, and possibilities. Strategically located and thoughtfully designed, these plots offer the perfect opportunity to build your dream home or secure a high-value asset for generations to come. With every inch rooted in potential, investing here ensures a lifetime of growth, appreciation, and pride. Choose The Rise Open Plots to create a legacy that stands the test of time.

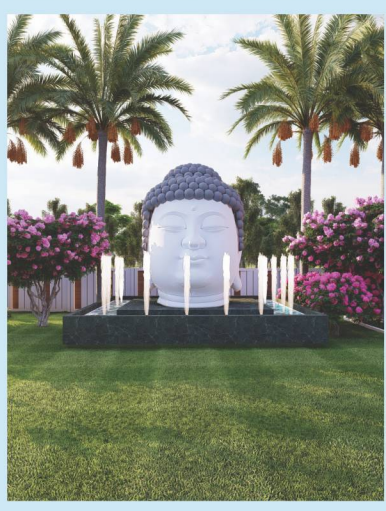


MASTER LAYOUT PLAN

Plan Showing the Proposed Lay-out in
D.No.126(P) of Namburu Village,
Pedakakani Mandal, Guntur District

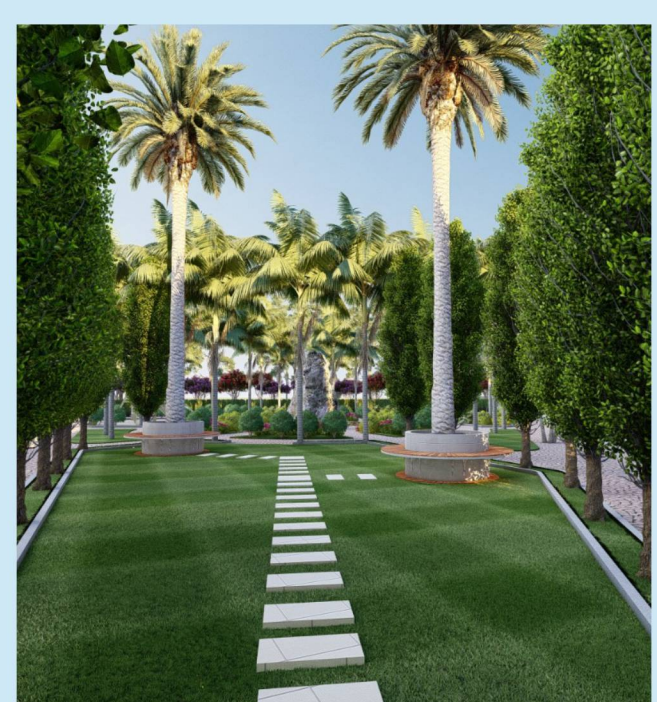


THE RISE OF ICONIC LIFE



OPEN SPACES, LIMITLESS OPPORTUNITIES

Experience the freedom to dream big and build even bigger at The Rise Open Plots. With expansive open spaces surrounded by lush greenery, this community offers the perfect setting to shape your aspirations into reality. Whether it's constructing your dream home, planning a smart investment, or creating a personal retreat, the possibilities here are truly limitless. Embrace a lifestyle of peace and prosperity with well-planned infrastructure, modern amenities, and a location that connects you effortlessly to urban conveniences. At The Rise Open Plots, open spaces are your gateway to endless opportunities.



THE RISE OF
ICONIC ASPIRATIONS
UNFOLDS
BEAUTIFULLY

